



# NEUCRETE

## Wideslab Floor Systems



### State of the Art Performance Floor

*"A time tested method of slab construction relevant for today's  
demanding floor specifications"*  
- Joe Neuber FCI

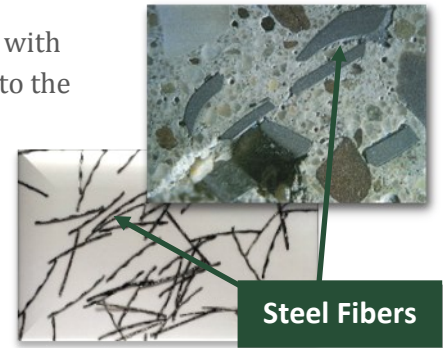


THE EXPERTS IN EXCELLENCE

## WHAT IS NEUCRETE ?

NEUCRETE is a slab design that offers flat, smooth and virtually curl free floors with fewer joints by using a time tested technology that has proven to be superior to the commonly used slab designs. We refer to this technology as wideslab construction.

NEUCRETE uses Single Course Installation giving the slab continuity from “top to bottom”. Our floors provide a beautiful, durable, polished finish that meets or exceeds design requirements, and owner’s expectations.



Steel Fibers

## NEUCRETE HISTORY -



Color Resources' wide-slab floor continues to withstand rugged load conditions without requiring joint maintenance.

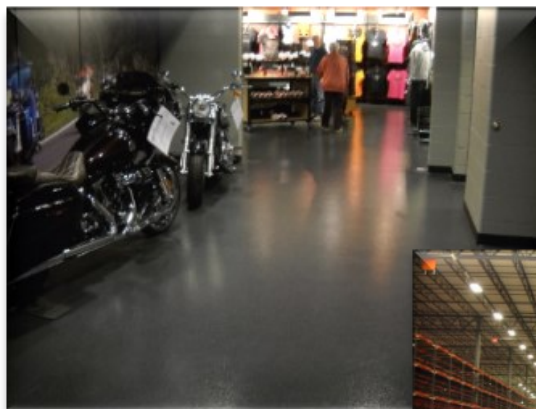


While many owners, developers and engineers consider wide-slab construction a new process, NEUCRETE has been developing and perfecting steel fiber technology for decades. Over 20 years ago we first designed a floor for Color Resources utilizing fiber technology (see photos at left) and today that floor is still in operation and has only one crack, a cold-joint due to the batch plant breaking down. During that same time we designed a 700,000 sf floor for Hanes Brands and a 400,000 sf floor for Pittsburgh Plate Glass. We used the same principles in each of these projects and received the same positive results. An added benefit is that none of these companies have had ANY joint maintenance issues.

Thankfully, over the years, fibers have evolved in such a way that floor finishing has improved, but the basic principles that we developed back then are still what we use today. NEUCRETE's wide-slab construction has certainly passed the test of time.

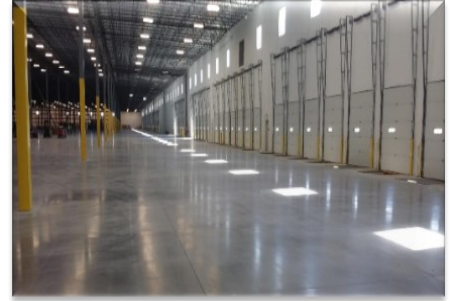
## NEUCRETE APPLICATIONS -

- Industrial/Commercial Warehouses
- Super Flat F min Slabs
- Distribution Centers
- Cold Storage/Freezer Facilities
- Retail
- Athletic Facilities



## NEUCRETE ADVANTAGES -

- Fewer Joints means a smooth ride that your Lift Truck Operators will brag about
- Lowers overall lifetime maintenance costs; fewer joints mean less wear and tear on fork trucks
- Time proven slab designs that allow for less problematic installation as compared to traditional floor designs
- Attention to detail from the TOP leaders in the concrete industry
- Best F/F and F/L numbers in the industry
- We do not use “magic potions” – we tell you what’s in the mix
- NEUCRETE provides owners with confidence that the project will be a SUCCESS



## WHY CHOOSE NEUCRETE?

- Best 5 Year Warranty in the business
- Best Quality Assurance Program in the Business
- Slab Engineering included and Stamped Drawings provided
- Review of all plans and specs to get it right the first time
- Consulting Service provided by both national and local experts
- Host and Chair NEUCRETE’s renowned Pre Pour Meeting
- Review and adjustment of the mix-design for lowest possible shrinkage based on the local available materials
- You always get the “A” Team

## NEUCRETE COMPETITIVELY PRICED SLABS -

For the same price as an ACI recommended slab, NEUCRETE provides a floor that matches any floor in the industry for beauty, durability, toughness, life expectancy and lowest maintenance cost of any competitive design.

NEUCRETE offers 2 different levels of slabs to meet owner expectations and budget:

NEUCRETE SLABS			
	Typical Slab		
<b>Joint Spacing</b>	12'6"	<b>50'</b>	<b>100'</b>
<b>Sawcuts</b>	1400 lf	<b>200 lf</b>	<b>0 lf</b>
<b>Warranty</b>		<b>5 Years</b>	<b>5 Years</b>
<b>Other Features</b>		<ul style="list-style-type: none"> <li>• All Neuber details</li> <li>• Dowel baskets at control joints</li> <li>• Surface densifier / hardener application</li> </ul>	<ul style="list-style-type: none"> <li>• All Neuber details</li> <li>• Dowel baskets at control joints</li> <li>• Surface densifier / hardener application</li> </ul>